

Welcome to ECOL1000: Ecological Basis of Environmental Issues

University of Georgia

Fall 2019

COURSE OVERVIEW:

This course is designed to give you the opportunity to wrestle with real-world “wicked” problems. “A wicked problem is a social or cultural problem that is difficult or impossible to solve for as many as four reasons: incomplete or contradictory knowledge, the number of people and opinions involved, the large economic burden, and the interconnected nature of these problems with other problems.”¹

Activities in the course will give you an appreciation of the interactions between the ecological, economic, and social spheres that govern our management of natural resources and the quality and quantity of ecosystem services natural systems provide. This background will provide you with the tools needed to evaluate environmental problems confronting society, so you will have a better understanding of how to protect and manage ecosystems for future generations.

INSTRUCTOR:

Dr. Krista Capps

Odum School of Ecology, Room 121

ecology1000@gmail.com

Office Hours: Mondays from 1:30pm to 2:30pm, by appointment only

Teaching Assistant:

Carol Yang

cy91370@uga.edu

Office hours: by appointment



What's in the syllabus?

Course Policies	2-3
Grading Scale	3
Important Dates	3
Attendance policies	4
Some FAQs	5



Wahl, 2017; modified from Rittel and Webber 1973

Throughout the semester, we are going to address the following questions:

- *Are extreme weather events becoming more intense?*
- *Will you have access to antibiotics that work in the next 50 years?*
- *What can we learn about the future of infectious diseases from the zika outbreak?*
- *What role does access to freshwater play in global conflicts?*
- *What are some of the social, ecological, and economic costs of producing a tomato?*

MEETING TIMES:

Lecture: MWF 12:20-1:10pm
Science Learning Center, Room 285

WE WILL ADHERE TO THE POLICIES OUTLINED IN THE “ATTENDANCE AND GRADING POLICY” DOCUMENT ON ELC

¹<https://www.wickedproblems.com/read.php>

REQUIRED READING MATERIALS:

SaplingPlus for Scientific American Environmental Science for a Changing World (Six Month Access)
Susan Karr; Anne Houtman; Jeneen Interlandi
©2018 | Third Edition
ISBN-10: 1-319-05964-3; ISBN-13: 978-1-319-05964-4



CONTACT INSTRUCTIONS:

Please contact us using email as we do not frequently check voicemail. Please use the email addresses we provide above; do NOT use the eLC system or other email addresses. *Hence, if you send messages to eLC or other email accounts, they will not be answered.*

Please note, we receive a large number of emails from students in the class asking questions which are directly answered by reading this syllabus. In the past, the volume of emails we receive makes it difficult to answer them in a timely manner.

Therefore, emails asking questions with answers that can be found in the materials on eLC will not be answered.

We will address questions in chronological order and will do our best to respond to your emails in a timely fashion. If you have a question that is complicated or that you think will take an excessive amount of time to answer via email, please meet with us during our office hours. You may also choose to include a phone number where we can contact you to answer the question. If appropriate and if you provide the number, we may call you to address the question. Please note, even with a contact number, your email will be addressed in the order in which it is received.

Please remember that your emails represent you as a student and a person. Typically, it is the most common method by which we interact with our students. Please consider drafting professional, effective emails when you contact us in order to aid us in supporting you in this class.

LEARNING OBJECTIVES:

By the end of this course you will:

- Have an elementary understanding of systems thinking
- Be able to describe and provide examples of how interactions between the ecological, economic, and social spheres govern our management of natural resources and the quality and quantity of ecosystem services natural systems provide
- Have an enhanced understanding of system structure and regulation at the organismal, population, community, and ecosystem levels
- Be able to define sustainability in a natural resource context
- Have a greater appreciation of environmental justice and environmental policy
- Gain experience interpreting figures and tables describing relationships between human activities and environmental phenomena



This section of Ecology 1000 can be counted as an Anchor Course for the UGA Sustainability Certificate!
<https://sustain.uga.edu/course/list>

COURSE GRADING:

Grading for the lecture portion of the course will be determined by attendance points and quizzes, launch pad activities, midterm exams, and a final exam. There will be more pre-class and in-class activity points offered than you can earn. The final grade distribution will be:

Pre/Post Class Assessment:	4%
Quizzes and other In-Class Activities:	26%
Pre-class activities:	17%
Exams (lowest of the first three scores will be dropped):	52%
Extra Credit (up to 25 points of extra credit may be earned)	



The plus/minus grading system will be used, according to UGA policy. This course grading will strictly follow this plus/minus grading scale: A = 93-100, A- = 90-92.9, B+ = 87-89.9, B = 83-86.9, B- = 80-82.9, C+ = 77-79.9, C = 73-76.9, C- = 70-72.9, D = 60-69.9, F = <60

Please note, you may receive up to 100% in the class. In other words, you may participate in all of the extra credit activities, but you may not receive more than 100% in the class. To learn more about how to calculate your grade or how to contest an exam or final score, please review the documents on eLC, especially "CALCULATING YOUR FINAL GRADE".

EXAMS	EXAM 1	SEPTEMBER 18
	EXAM 2	OCTOBER 16
	EXAM 3	NOVEMBER 13
	FINAL EXAM	DECEMBER 11 (12-3PM SAME ROOM)**
DAYS WITH NO CLASS	LABOR DAY	SEPTEMBER 2
	FALL BREAK	NOVEMBER 1
	THANKSGIVING BREAK	NOVEMBER 27-DECEMBER 1
EXTRA CREDIT DEADLINES	REVIEW ALL OF THE EXTRA CREDIT	THROUGHOUT THE SEMESTER

EXAMS (LOWEST OF THE FIRST THREE SCORES WILL BE DROPPED; 100 POINTS EA.):

Four exams will be given and the lowest score of the first three will be dropped (A total of 300 of 400 points will be counted). Therefore, there will be no make-up exams given. The questions featured on the exams will be pulled primarily from material covered in lectures. The final exam is required, but will not be cumulative; it will function as a regular exam and will be written to be completed in one hour. There will be no make-up final exam.

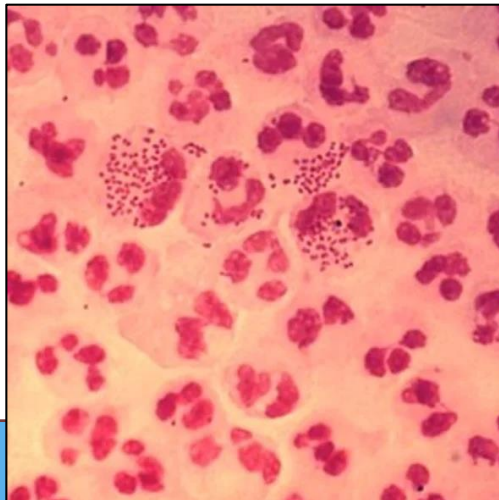
Exam scores will be posted on eLC, but hard copies of your mid-term exams or finals will not be returned. After scores are posted, you may schedule a meeting by appointment to review the exam.

Meeting with Dr. Capps to discuss performance on an exam: If you would like to meet to discuss your performance on an exam, I ask that you take notes in class on the day you will be meeting with me and bring them with you to the meeting.



EXTRA CREDIT (YOU MAY CHOOSE TO COMPLETE UP TO 25 POINTS FOR CREDIT):

You may earn up to up to 25 points through Extra Credit. To receive credit, you must attend the entire event and follow all of the directions. **You must follow ALL of the directions provided here AND in the eLC (if they are different) to receive ANY points for the activities.** None of these activities may be completed late or made up at a different time. Please review the "Attendance and Grading Policy" sheet on eLC for details. We recommend doing this early to ensure that you can earn extra credit.



ATTENDANCE:

Attendance is not required, but the pre-class activities are required and all of the material presented in class may be included in quizzes or exams. ***You are not required to attend the three classes designated for mid-term exam review, but we do tend to cover many of the concepts that end up on the exam.***

A subset of slides from the lecture will be posted on eLC. These slides will primarily be slides in which data are presented in class. I will do my best to post them before class, but I may revise them after lecture if important points are raised or if questions during class highlight topics that are confusing. Test questions may cover all of the material covered in class, not just the material included on the eLC slides; therefore, it is important to attend lecture.

Coming into class late because of course scheduling: We realize that many of you have to walk to/from another class on North Campus and you may be arriving late or leaving class early. We understand this challenge. However, you are responsible for ALL of the material covered in class and for the in-class activities. We also ask that you follow any policies we design to reduce the distraction caused by students entering and leaving the classroom. You will not receive any additional time on exams, so if you choose to come late or leave early on a daily basis, we recommend you try to rearrange your schedule on exam days.

Missing class because of an official, university-approved event: If you will be missing class because of a university-approved event, such as a sporting event, field trip, etc. please bring in official documentation about the event during the first two weeks of class. As long as you attend class and participate via TopHat, this should not be an issue for your grade. However, this is especially important if you will be missing an exam because of the event.

(MOSTLY) COMPUTER-FREE ZONE:

Current research demonstrates that students perform better and retain more information from classes when they are not working on a computer AND cannot see the computer screens of other students. Therefore, a couple of rows of the classroom are going to be deemed (mostly) computer-free zones. In these rows, computers can only come out when we are completing TopHat activities.

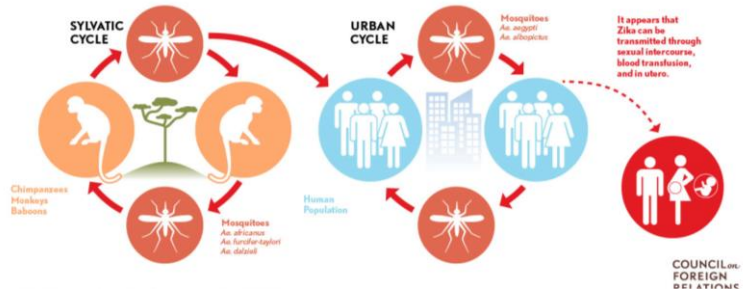
SENSITIVITY TO RELIGIOUS PRACTICES:

Students should address potential conflicts due to religious practices with the faculty member at the beginning of the semester so that arrangements can be made to accommodate the religious observance if that accommodation does not create an undue hardship. Absence from classes or examinations for religious reasons does not relieve students from responsibility for any part of the course work required during the period of absence. It is the obligation of students to provide faculty with reasonable notice of the dates of religious holidays on which they plan to be absent. It is the responsibility of the instructor and student to determine the conditions under which work will be made up when a student misses class or other academic obligations because of a religious holiday. *Please note, assignments for this class were designed to allow students to miss one midterm exam and multiple pre-class and in-class assignments without penalty.* Therefore, with the exception of the final exam, you should be able to miss a few classes without penalty.

ACADEMIC HONESTY: The School of Ecology adheres to the University's standards in defining academic honesty; you are bound by the rules governing academic honesty at UGA. Cases of suspected academic dishonesty will be reported to the Office of Judicial Programs. Ignorance of what constitutes plagiarism or dishonest work is no excuse. Conviction will result in a grade of "F" for the course and may incur additional penalties from the University. Please refer to the UGA Academic Honesty Policy and Student Honor Code.

ACCESS STATEMENT: If you plan to request accommodations for a disability, please register with the Disability Resource Center. They can be reached by visiting Clark Howell Hall, calling 706-542-8719 (voice) or 706-542-8778 (TTY), or by visiting <http://drc.uga.edu>. Please note, if you register with the Disability Resource Center and need special accommodations for this class, you must schedule a meeting with me to discuss your needs. Therefore, after registering with them, please schedule a meeting with me. If you need note-taking services, you must schedule a meeting with me before connecting with a note-taker.

Please remember to review detailed documents about policies and activities on eLC. Course announcements will be made through eLC and many of the important dates will be included on the eLC calendar. We highly recommend that you review, "Frequently Asked Questions", "Calculating your Final Grade", and "Attendance and Grading Policy".



INFORMATION THAT IS FREQUENTLY REQUESTED FROM STUDENTS

- Make sure to read through the documents on eLC, as we will not usually respond to questions with answers that are found in the course documents.
- In general, there are no make-ups for any activities in the class.
- We will only answer emails that are sent to the appropriate email addresses.
- You may fail the class if you do not participate in class and complete the pre-class readings.
- Extra credit opportunities can significantly raise your score if you take advantage of them!
- The lowest score of your first three exams will be dropped.
- You MUST take the final.
- The final is not cumulative.